

## **BD Loops** Debunks Industry Myth: Electrical Lines and Loops

---

**Myth:** *Keep electrical lines 3' away from loops.*

**Truth:** *60 cps Electrical lines do not interfere with inductance loops.*

BD Loops has been fighting this myth for over 8 years, this myth is even present in industry training schools despite all the evidence we have provided that clearly contradicts this old myth.

BD Loops located an overhead 60 cps (cycles per second) 66,000 volt transmission line that terminated into an underground feed at a traffic intersection (*see pictures: 1 & 2*). Because of nearby construction the underground feed line is clearly marked with red spray paint. This line travels right below 5 traffic loops (*see pictures: 4,5,6, & 7*) at a depth of less than 4ft. The feed lines carry up to 120 million watts without any interference with the 5 loops.

Typical underground electrical feed line for small businesses and residential properties will be under 300k watts or less than 1% of the above example.

The reason why power lines do not interfere with inductance loops is the electrical current is 60 cps where a typical detector is in the range of 20k to 120k cps.

We even took an operational table top loop display system and held it up to within inches of this 120 million watt feed without any interference (*see picture 8*).

To further prove the concept see picture 9, where 220,000 volt electrical transmission lines are sharing the same tower support with a cell phone (700MHz-1900MHz frequency band) tower. This is because the frequencies are so different and don't cause interference. They are outside the range of harmonic distortion.

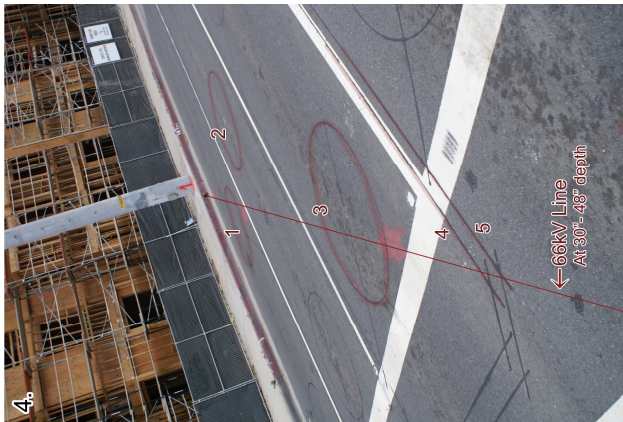
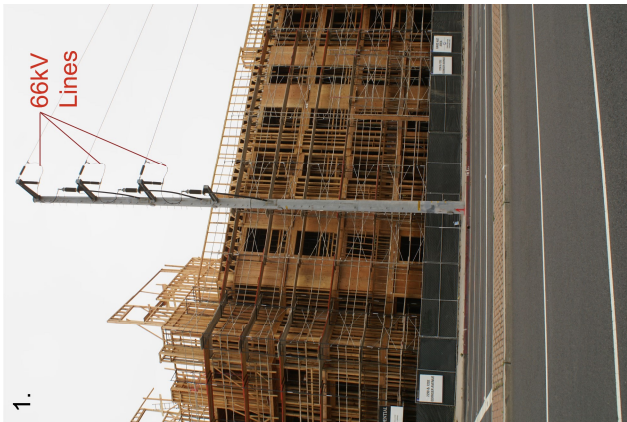
This myth about power lines and loops is especially frustrating, because it makes the installer's job needlessly difficult. BD Loops knows that this myth is affecting many installers because "How can I install loops near power lines?" is the most common tech support question we are asked.

I sincerely hope this myth can be finally put to bed.

If you would like to read more about electrical lines and loops please visit the [www.BDLoops.com](http://www.BDLoops.com) "Education and More" section. BD Loops has multiple write ups and test results about this topic (and many others).

*BD Loops is the #1 manufacturer of preformed direct burial and saw-cut inductance loops for the gate, door, and parking industries. With over 15 years in business the quality of BD Loops is unparalleled. BD Loops products are available through over 400 distributors in the U.S. and Canada. Visit [www.BDLoops.com](http://www.BDLoops.com) to find a distributor near you.*

Be on the lookout for our upcoming article where we will be debunking another industry myth - installing loops with 220 volt electrical snow melt systems.





**BD Loops**

8161 Monroe Ave  
Stanton, CA 90680  
P: 714-723-0946  
F: 714-890-1603

---

# BD Loops

## Loops and Power Lines



• • • • • • • • • •

*Observations of a loop's performance  
when laid directly over power lines.*



⋮

---

# Loops and Power Lines

*Observations of a loop's performance when laid directly over power lines.*

## **Purpose:**

- Observe and record the affect power lines have on loop performance.

## **Hypothesis:**

When the loop is connected to a fully featured detector module there will be no visible/recordable effect. Loop may experience interference when connected to a more basic detector module.

## **Materials:**

- BD Loops preformed saw-cut loop made with 16AWG wire. Both loop and lead-in section are made with untwisted jacketed wire.
  - 1 - SC 24-20 (4x8 (24ft) loop with a 20ft lead-in)
- 1 – EDI Detector Model#LMA-1800 (detector has a deflector meter to show how much an object changes the inductance of a loop)
- 1-EDI Oracle Detector Model – Detector has 20 levels of sensitivity.
- 1 Diablo DSP-11
- Sand bags to hold loop in place
- Untwisted power extension cords.
- Power Tools: Heat Lamp, Shop Vac, Table Saw, Grinder, and 3 Heat Guns.

## **Procedure:**

We laid out a 6'x6' preformed direct burial loop and directly tied an untwisted power line directly to one of the loop's legs with cable ties. Approx. 15' of Twisted and untwisted power lines were laid over the loop.

The loop was connected to 3 different detectors set to the highest sensitivity and the power was surged (turned on and off) to see if any crosstalk or false detections occurred. Each detector was tested by holding a metal bar over the loop to check if they were able to obtain a proper detection.

The detection test with the metal bar was repeated when the power was being surged to see if there would be any interference.

Power tools were connected to the power lines until the circuit popped. The circuit was overloading at 44.5 amps.

Power Tool	Amps
Heat Lamp	2.5
Shop Vacuum	1
Table Saw	2
Grinder	3
Heat Gun	13
Heat Gun	13
Heat Gun	13
Total:	44.5 or 4,895 watts



**Results:**

EDI LMA 1800

Sensitivity Level: 9 (Highest)	False Detection: <b>No</b>	Crosstalk: <b>No</b>	Detect Metal Bar: <b>Yes</b>
--------------------------------	----------------------------	----------------------	------------------------------

EDI Oracle			
Sensitivity Level: 20 (Highest)	False Detection: <b>No</b>	Crosstalk: <b>No</b>	Detect Metal Bar: <b>Yes</b>

The EDI Oracle has a DEFLECTOMETER® streaming graph which shows the call strength over time (in 6 second intervals) The streaming graph showed no activity when the power was on or surged, it only showed activity when the metal bar was placed over the loop to check the detector.

Diablo DSP-11			
Sensitivity Level: N/A	False Detection: <b>No</b>	Crosstalk: <b>No</b>	Detect Metal Bar: <b>Yes</b>



Note: The graph activity is from the metal bar test.

Results show that all the detector modules did not experience interference, or false detections when the power was on or when the power surged. There were no false detections or interference recorded on any of the detector modules.

**Conclusion:**

Loops laid over power lines are unlikely to experience false detections or interference for most common applications.

## What this means, **BD Loops** comments:

This is a frustrating myth that BD Loops has been trying to combat since 2013. As you can see in the test results all 3 detectors did not experience cross talk or false detections during the test. We added more power tools until we were able to trip the circuit breaker. Even with the overloaded circuit no cross talk or false detections occurred.

Standard gate power feed ranges from 200-300 watts on average, our test surge went up to 4,895 watts (or over 10x).

This is something that we find puzzling, the NEC (National Electric Code) requires that power lines be direct buried at least 24" below the surface (18" if under concrete slab). When power lines are run in a non metallic raceway the NEC requires a minimum burial depth of at least 18" below the surface (12" if under concrete). [NEC does not apply to inductance loops.](#)

If there is no interference from power lines tied directly to a loop, where did the 3' standoff from electrical lines recommendation that is taught in gate and door industry schools come from? Why on earth would we need harder to follow standoff guidelines than the NEC? I would like to see the testing that determined this standard, it appears to be based on hearsay.

Power lines are often run under the driveway, keeping a 3' stand off distance from electrical lines would make installing inductance loops impossible for a large number of applications. Why are industry schools teaching installers "installation standards" with no supporting evidence? Why are these schools making it harder to installers to do their jobs?